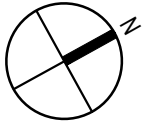
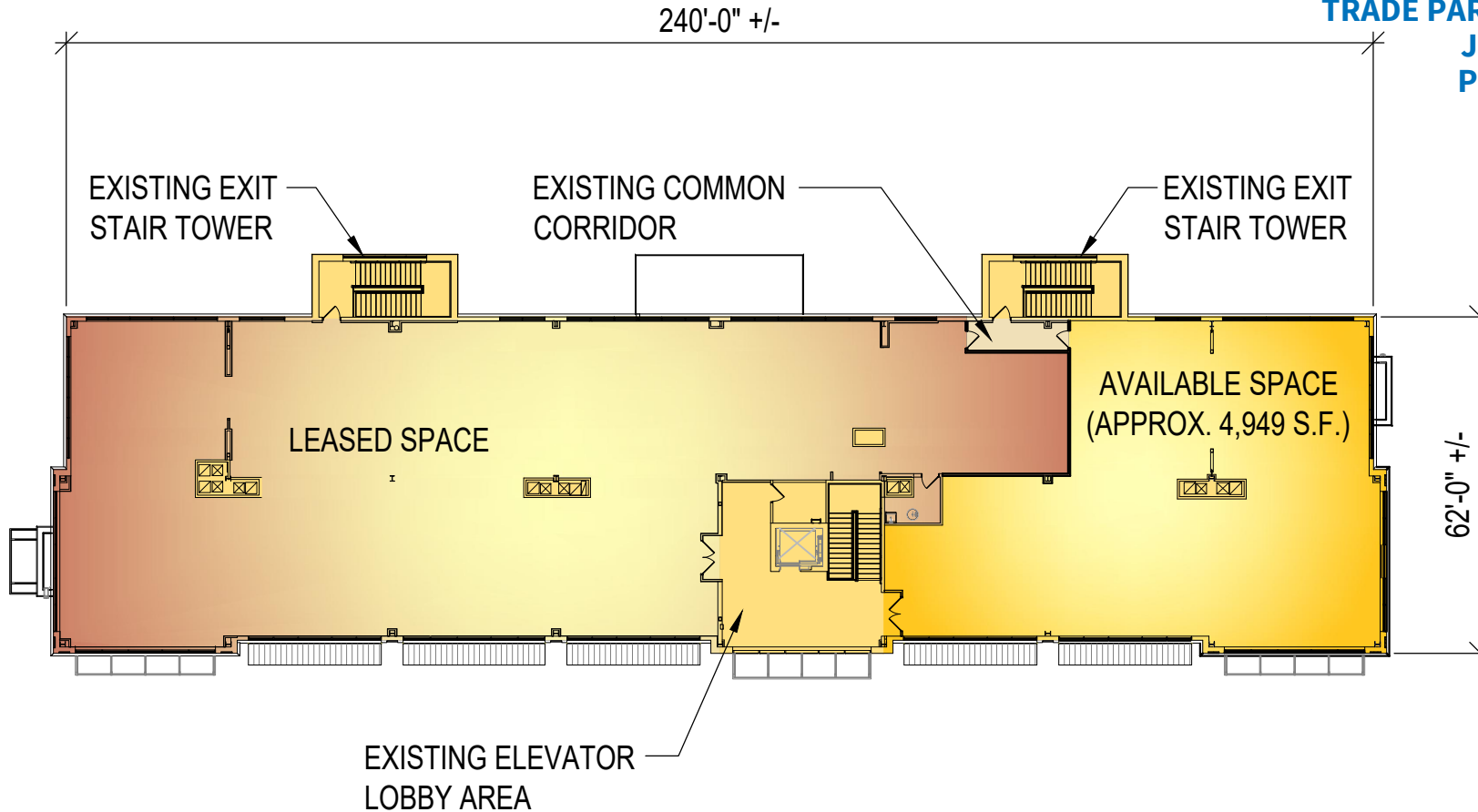


CONCEPTUAL SECOND FLOOR PLAN



AVAILABLE VARIOUS S.F. OFFICE / RETAIL SPACES WITHIN AN EXISTING TWO STORY 30,891 S.F. MULTI-TENANT BUILDING

PARCEL #1
10-196 KEYSTONE AVENUE
CENTERPOINT COMMERCE AND
TRADE PARK EAST - PHASE IIC
JENKINS TOWNSHIP
PITTSTON, PA 18640



These plans have been prepared solely for marketing purposes for the exclusive use of -- Mericle Commercial Real Estate Services

Q:\Shared\Properties\CPE IIC\100 Keystone (1) (J2658)\Base Bldg. (J2658)\2658\mdc\DWG-SPEC\mktg\MKT2658 - PARCEL 1 CPE-PHIIC (01252024).dwg LD

570.823.1100



mericle.com



East Mountain Corporate Center
100 Baltimore Drive, Wilkes-Barre, PA 18702

WE BUILD BUILDINGS.
WE BUILD CAREERS.
WE BUILD COMMUNITIES.